

3 Rivers Yakima Borges B01

3 Rivers SC

Yakima, WA

B01 total strength=771

attack=1.47 defense=0.56

fall league = DVI BU12 Umbro U12

notes= Rangers; Borges 2013

alt names used:

THREE RIVERS SC 3RSC YAKIMA B01 BORC

YAKIMA RANGERS RANGERS U11 (WA)

3rsc Yakima B01 Borges

YAKIMA RANGERS RANGERS 01 (WA)

Venues played:

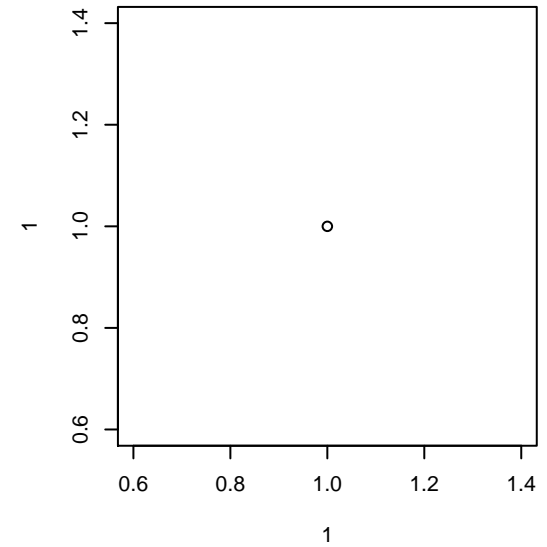
Sagebush Classic Boys U12 U12

DVI BU12 Umbro U12

Founders Cup B01

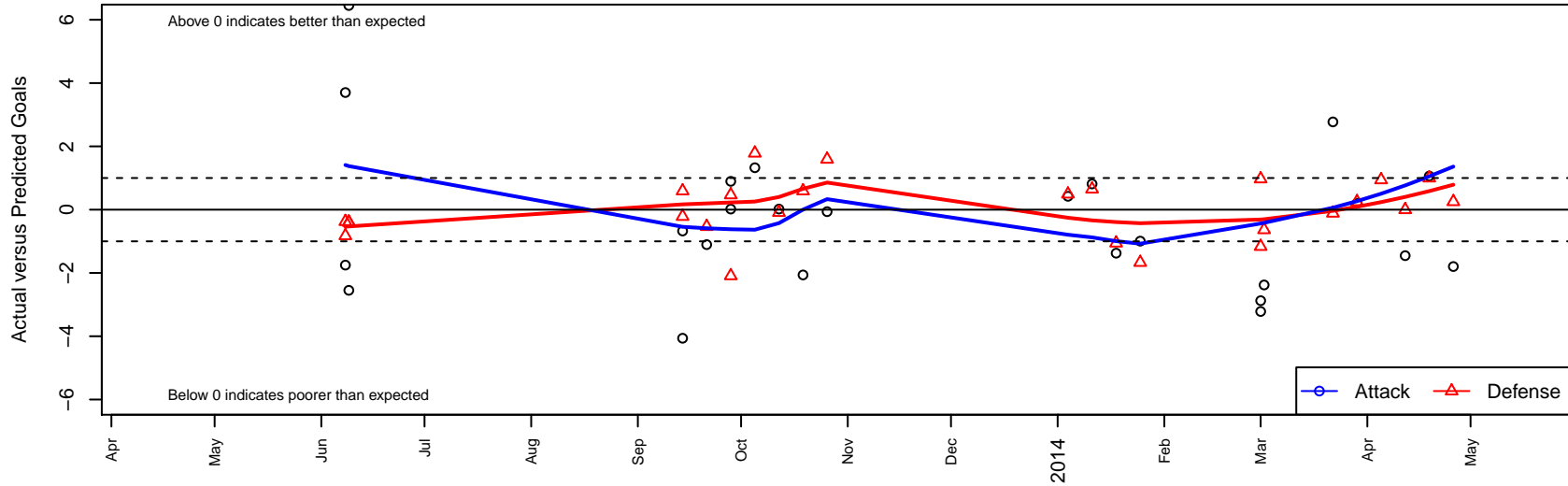
Blue Mtn Exchange Group A U12

Spr D6 BU12 U12



3 Rivers Yakima Borges B01

Dots are actual minus expected GF (blue circles) and GA (red triangles).
Blue line is smoothed change in attack strength. Red is smoothed change in defense strength.



	date	home		away		venue	pred.home	pred.away
26733	2014-04-26	3 Rivers Yakima Borges B01	4	CBYSA Crushers B00	1	Spr D6 BU12 U12	5.80	1.25
26574	2014-04-19	CBYSA Thunder B01	0	3 Rivers Yakima Borges B01	8	Spr D6 BU12 U12	1.00	6.94
26035	2014-04-12	3 Rivers Yakima Borges B01	4	CBYSA Chargers B01	1	Spr D6 BU12 U12	5.45	1.00
25641	2014-04-05	CBYSA Tigers B99	1	3 Rivers Yakima Borges B01	12	Spr D6 BU12 U12	1.94	3.31
25448	2014-03-29	CBYSA Crushers B00	1	3 Rivers Yakima Borges B01	6	Spr D6 BU12 U12	1.25	5.80
25175	2014-03-22	3 Rivers Yakima Borges B01	10	Union County United B01	1	Spr D6 BU12 U12	7.23	0.89
23683	2014-03-02	3 Rivers Yakima Borges B01	3	Idaho Thunder Halseth B01	2	Blue Mtn Exchange Group A U12	5.38	1.36
23435	2014-03-01	3 Rivers Yakima Borges B01	1	3 Rivers Lowry B00	1	Blue Mtn Exchange Group A U12	3.88	1.97
23437	2014-03-01	3 Rivers Yakima Borges B01	0	CB United Navy B01	4	Blue Mtn Exchange Group A U12	3.22	2.84
21711	2014-01-25	TUSK United B01	4	3 Rivers Yakima Borges B01	1	Founders Cup B01	2.33	1.99
21321	2014-01-18	Tacoma United San Martin B01	4	3 Rivers Yakima Borges B01	1	Founders Cup B01	2.94	2.38
21107	2014-01-11	3 Rivers Yakima Borges B01	7	Seattle United NE White B01	0	Founders Cup B01	6.19	0.65
20904	2014-01-04	Crossfire Select Nakamura B01	1	3 Rivers Yakima Borges B01	4	Founders Cup B01	1.49	3.58
15772	2013-10-26	3 Rivers Yakima Borges B01	7	Missoula Strikers Black B01	1	DVI BU12 Umbro U12	7.06	2.59
14837	2013-10-19	3 Rivers Yakima Borges B01	5	Missoula Strikers Black B01	2	DVI BU12 Umbro U12	7.06	2.59
13780	2013-10-12	Sting SC Valencia B01	3	3 Rivers Yakima Borges B01	2	DVI BU12 Umbro U12	2.91	1.98
12751	2013-10-05	3 Rivers Yakima Borges B01	4	SSC Shadow Iniesta B02	0	DVI BU12 Umbro U12	2.67	1.78
11832	2013-09-28	3 Rivers Yakima Borges B01	2	Sting SC Valencia B01	5	DVI BU12 Umbro U12	1.98	2.91
11833	2013-09-28	3 Rivers Yakima Borges B01	7	Moscow United B01	0	DVI BU12 Umbro U12	6.10	0.47
10867	2013-09-21	Moscow United B01	1	3 Rivers Yakima Borges B01	5	DVI BU12 Umbro U12	0.47	6.10
9892	2013-09-14	SSC Shadow Iniesta B02	2	3 Rivers Yakima Borges B01	2	DVI BU12 Umbro U12	1.78	2.67
9894	2013-09-14	Missoula Strikers Black B01	2	3 Rivers Yakima Borges B01	3	DVI BU12 Umbro U12	2.59	7.06
795	2013-06-09	3 Rivers Yakima Borges B01	9	3 Rivers Black B01	3	Sagebush Classic Boys U12 U12	2.55	2.60
796	2013-06-09	3 Rivers Yakima Borges B01	0	3 Rivers Black B01	3	Sagebush Classic Boys U12 U12	2.55	2.60
723	2013-06-08	Juneau Taku Blast B01	1	3 Rivers Yakima Borges B01	8	Sagebush Classic Boys U12 U12	0.62	4.30
724	2013-06-08	Soccer Edge Academy Maroon B01	2	3 Rivers Yakima Borges B01	2	Sagebush Classic Boys U12 U12	1.17	3.75